

Its reliability and excellent quality/price ratio have brought this model great success over the years, and it is still one of the most popular in the entire Corghi range.

Operation is semiautomatic with swinging arm and 18" turntable, and the machine is ideal for mounting and demounting car, van and motorcycle wheels.

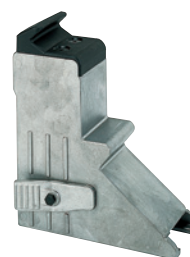
The mount/demount head fitted on the machine as standard is designed to protect even the most delicate rims, through the use of interchangeable plastic parts for the inner surfaces in contact with the rim during tyre mounting/demounting.

What's more, for maximum rim protection, the **machine comes complete** with plastic guards for all parts which might damage the rim during the various working stages, such as the turntable clamps, the bead breaking shoe and the bead lifting lever.

Details such as the **taller cast clamps and interchangeable clamping zones** reflect the priority given to ergonomics, safety and low operating costs.



➤ Mount/demount head for motorcycle and scooter wheels



➤ Motorcycle clamps, 15"-23"

This product is approved by:



»»» Main characteristics

- **Semiautomatic tyre changer with swinging arm and 18" turntable**
- Sliding support with **interchangeable clamping zones**
- **Taller cast clamps** for better rim clamping from inside and outside
- Inside and outside of clamps totally protected by **plastic guards** to prevent damage to the most delicate rims
- Turntable with two pneumatic cylinders capable of clamping any types of rim securely
- **Fixed arm support column** with high torsional rigidity in all working positions
- Swinging horizontal arm for rapid positioning of the head in relation to the rim
- **Manual clamping** of the horizontal and vertical arms
- Head with interchangeable plastic parts to **protect rims**
- Bead breaking unit with pneumatic cylinder in stainless steel
- Fixed bead breaker support
- **Available with traditional inflation or T.I. bead insertion and inflation system**
- Available in electrically or pneumatically operated versions

> Self-draining filter + lubricator unit. Increases the lifetime of components and the machine



> Detail of clamping zones

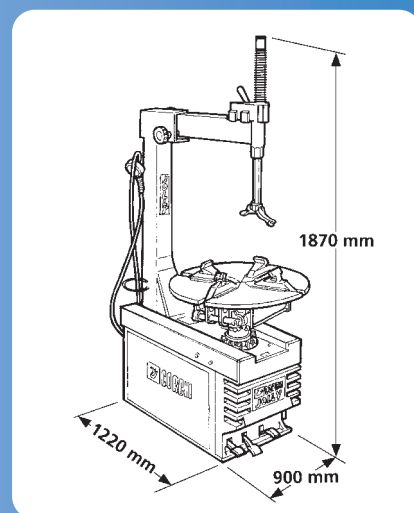


> Clamping zones



turntable	inside clamping capacity	from 13" to 21"
	outside clamping capacity	from 10" to 18"
	maximum tyre diameter	1000 mm / 39"
	maximum tyre width	305 mm / 12"
	rotation torque	1000 Nm
	rotation speed	6.5 rpm
bead breaker	type	Fixed arm
	maximum opening	320 mm
	shoe force	15500 N
	support	fixed
tool	working range	from 8" to 24"
	column	fixed
	head clamping	manual
power supply	electrical 3ph	230/400 V - 0.55 kW
	electrical 1ph	110/230 V - 0.75 kW
	pneumatic	on request
operating pressure		10 bar
weight	max	190 kg

Technical data



Technical data

		A2030	A2025	A2020
turntable	internal clamping capacity	from 13" to 26"	from 13" to 26"	from 13" to 26"
	external clamping capacity	from 10" to 26"	from 10" to 24"	from 10" to 20"
	maximum tyre diameter	1100 mm / 43"	1100 mm / 43"	1100 mm / 43"
	maximum tyre width360 mm / 14"	360 mm / 14"	360 mm / 14"	
	n. of clamps	4	4	4
	n. of cylinders	2	2	2
	rotation torque	-	1200 Nm	1200 Nm
	DV version rotation torque	1300 Nm	1300 Nm	1300 Nm
	rotation speed	-	8 rpm	8 rpm
	DV version rotation speed	from 6 to 15 rpm	from 6 to 15 rpm	from 6 to 15 rpm
	height above the ground	675 mm	675 mm	665 mm
	type	adjustable arm with extending shoe	fixed arm with extending shoe	fixed arm
bead breaker				
	maximum opening	380 mm	380 mm	380 mm
	shoe force	15500 N	15500 N	15500 N
	support	telescopic	telescopic	telescopic
tool	working range	from 8" to 26"	from 8" to 26"	from 8" to 24"
	column	pneumatic tilting	pneumatic tilting	pneumatic tilting
	head clamping	pneumatic	pneumatic	pneumatic
	power supply	electrical 3ph	230/400 V - 0.75 kW	230/400 V - 0.75 kW
	electrical 1ph	-	110/230 V - 0.75 kW	110/230 V - 0.75 kW
	DV version electrical 1ph	230 V -0.75 kW	230 V - 0.75 kW	230 V - 0.75 kW
	pneumatic	-	on request	on request
operating pressure	10 bar	10 bar	10 bar	10 bar
	standard version	249 kg	249 kg	242 kg
weight	T.I. version	259 kg	259 kg	252 kg



Technical data

turntable	internal clamping capacity	A2015		A2005		A2000		JOLLY	
		from 13" to 23"		from 13" to 23"		from 13" to 23"		from 13" to 21"	
		from 10" to 20"		from 10" to 20"		from 10" to 20"		from 10" to 18"	
	maximum tyre diameter	1100 mm / 43"		1100 mm / 43"		960 mm / 38"		1000 mm / 39"	
maximum tyre width		305 mm / 12"		305 mm / 12"		305 mm / 12"		305 mm / 12"	
	n. of clamps	4		4		4		4	
	n. of cylinders	2		2		2		2	
	rotation torque	1200 Nm		1000 Nm		1000 Nm		1000 Nm	
	DV version rotation torque	1300 Nm		-		-		-	
	rotation speed	8 rpm		6.5 rpm		6.5 rpm		6.5 rpm	
	DV version rotation speed	from 6 to 15 rpm		-		-		-	
	height above the ground	665 mm		665 mm		-		-	
bead breaker	type	fixed arm		fixed arm		fixed arm		fixed arm	
	maximum opening	320 mm		320 mm		320 mm		320 mm	
	shoe force	15500 N		15500 N		15500 N		15500 N	
	support	fixed		fixed		fixed		fixed	
tool	working range	from 8" to 24"		from 8" to 24"		from 8" to 24"		from 8" to 24"	
	column	pneumatic tilting		pneumatic tilting		fixed		fixed	
	head clamping	pneumatic		manual		manual		manual	
power supply	electrical 3ph	230/400 V - 0.75 kW		230/400 V -0.55 kW		230/400 V -0.55 kW		230/400 V -0.55 kW	
	electrical 1ph	110/230 V - 0.75 kW		110/230 V - 0.75 kW		110/230 V - 0.75 kW		110/230 V - 0.75 kW	
	DV version electrical 1ph	230 V -0.75 kW		-		-		-	
	pneumatic	on request		on request		on request		on request	
operating pressure		10 bar		10 bar		10 bar		10 bar	
weight	standard version	225 kg		214 kg		192 kg		180 kg	
	T.I. version	235 kg		-		202 kg		190 kg	

